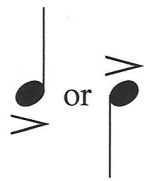


# Accent Mark



means accent the note by playing it louder than the others around it.



# Dinosaur Stomp

5-Finger Scale

Slow and heavy

*f* Crash! Boom! Thunk! Make way. Crash! Boom! Thunk! Love to

5 *5 on \_\_\_?*

3 *3 on \_\_\_?*

2 *2*

1

5

2 *2*

1

5

2 *2*

1

5

3 *3 on \_\_\_?*

1 *1 on \_\_\_?*

4

1

tree trunks break. The earth cracks and shakes. Love to

2

2

2

13

5

5

1

5

8va

roar and do the Di - no - saur Stomp!



Is the first note in *measure 15* the tonic or the dominant?  
Does the piece end on the tonic or the dominant?